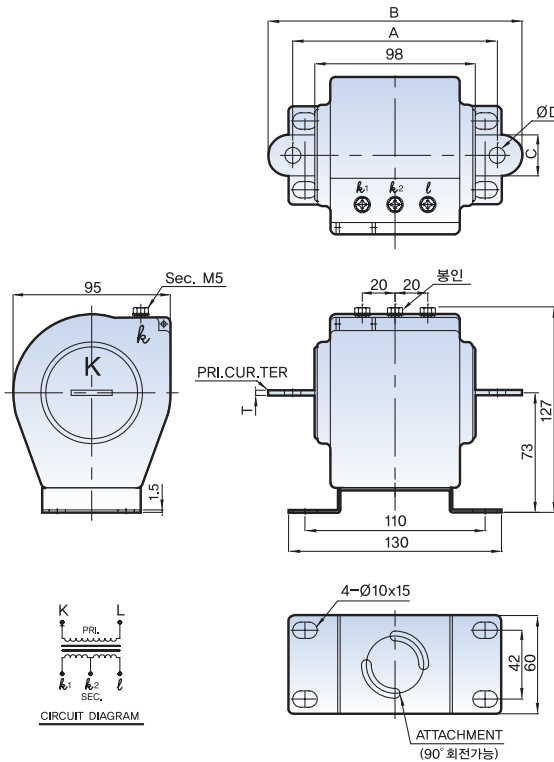
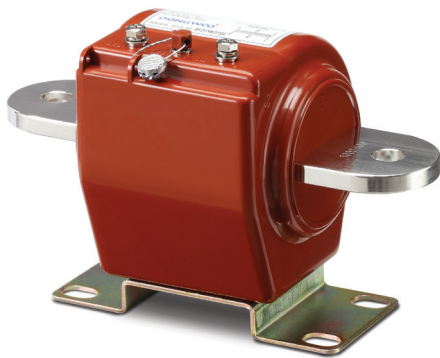


Current Transformer

DCI-KP2

Max. Voltage : 230V

- Winding Type 권선형
- Metering Application 계기용
- Busbar Type 부스바 취부형
- For Indoor 옥내용
- Double Ratio 이중비
- Epoxy Molded Type (Case : ABS) 에폭시 몰드형



▪ Specification 사양

Model	Pri. Cur.(A) 1차 전류	Sec. Cur.(A) 2차 전류	Class 계급	Burden 부담	Weight(kg) 중량	Dimension (mm) / 치수				
						A	B	C	T	D
DCI-KP2	150 - 75A	5A	0.5 W	15 VA	≒ 2.0	135	165	25	3,2	10
	300 - 150A				≒ 2.8	135	165	30	5	13
	400 - 200A				≒ 2.8	150	190	40	6	13
	500 - 250A 600 - 300A				≒ 2.8	150	190	40	6	13
	800 - 400A 1000 - 500A				≒ 2.8	150	190	50	8	13